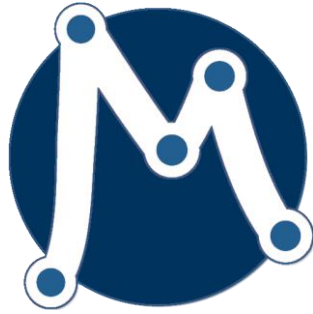




MediTutor  
Rehabilitation Software



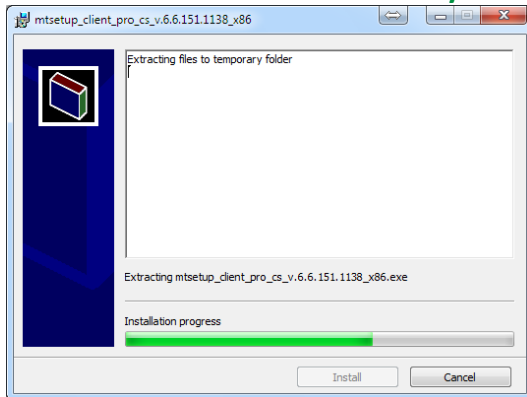
Upgrade installation guide  
Professional edition  
Ver. 6.x

16 June 2014

1. **Download** the client installation software from the following links:  
[MediTutor Professional Client Setup v6 \(32bit\)](#)  
[MediTutor Professional Client Setup v6 \(64bit\)](#)
2. **Double click** of the setup file (32bit or 64bit)

 mtsetup\_client\_pro\_cs\_v.6.6.151.1138\_x64\_MediTouch\_Pkg.exe  
 mtsetup\_client\_pro\_cs\_v.6.6.151.1138\_x86\_MediTouch\_Pkg.exe

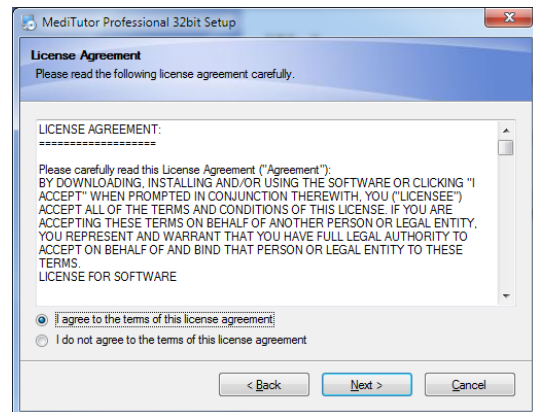
### File extraction starts **automatically**



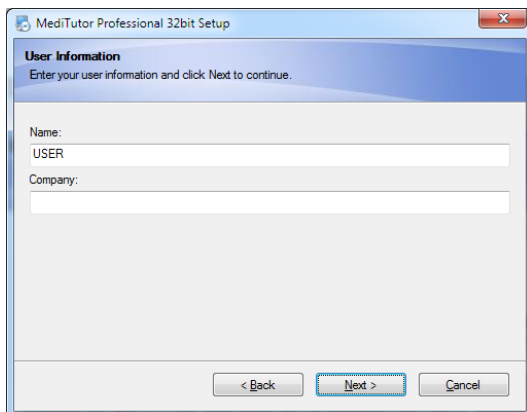
### Press **Next**



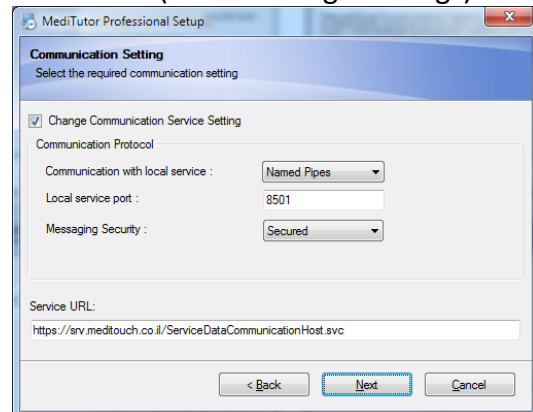
### Press **Next**



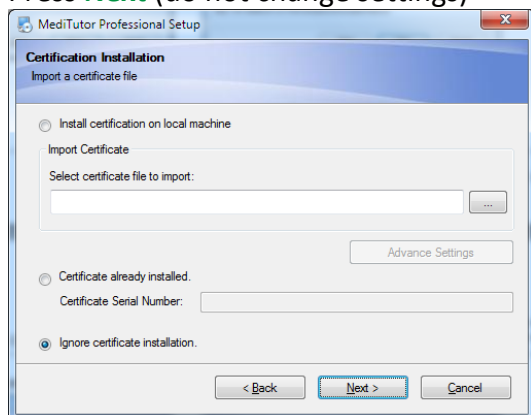
### Press **Next**



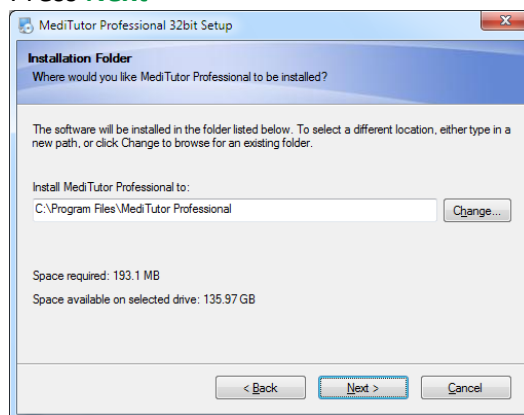
### Press **Next** (do not change settings)



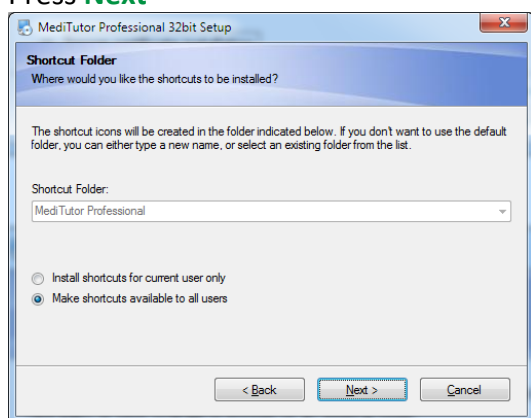
Press **Next** (do not change settings)



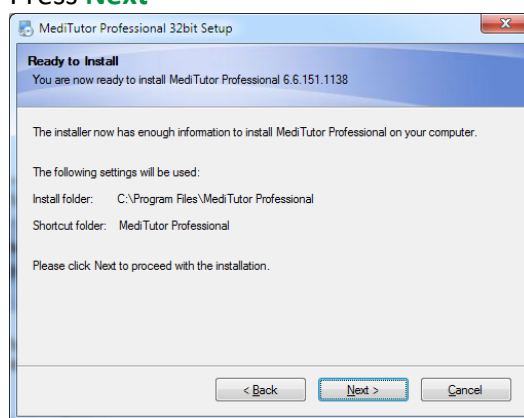
Press **Next**



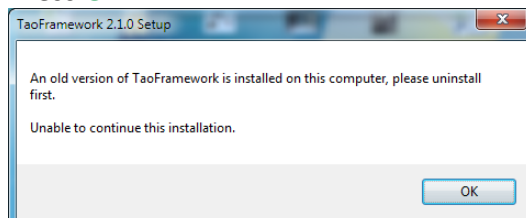
Press **Next**



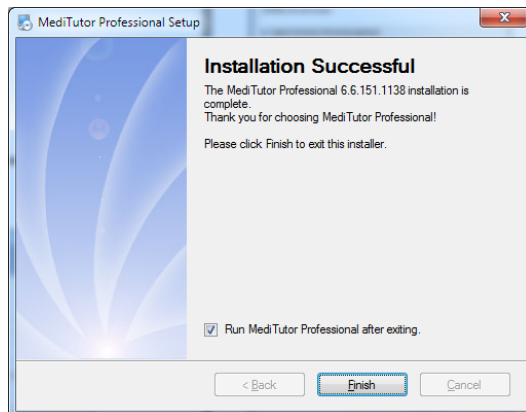
Press **Next**



Press **OK**



Press **Finish**



3. **Login** as usual