



3DTutor™

3DTutor Rehabilitation Device

Device user guide Model: 3DT100





3DTutor™

3DTutor Rehabilitation Device

Device user guide Model: 3DT100



Table of Contents

1.	Getting Started	4
2.	Warnings	5
3.	Maintenance	5
4.	Indications	5
5.	Contra-Indications	5
6.	Side Effects	6
7.	Product Specification	6
7.1	Product Labels	6
7.2	Dimensions	6
7.3	Sensor.....	6
7.4	Communication	6
7.5	Power Supply.....	6
7.6	Environmental conditions	6
7.7	Functionality.....	7
7.8	Features	7
7.9	Regulation	7
7.10	Manufacturer	7
7.11	Illustration	8
8.	Package	8
8.1	Content	8
8.2	Outside package	8
9.	Labeling	9
9.1	On USB cable	9
9.2	On case	9
9.3	On carton	9
10.	Warranty	10
11.	Contact Us	10

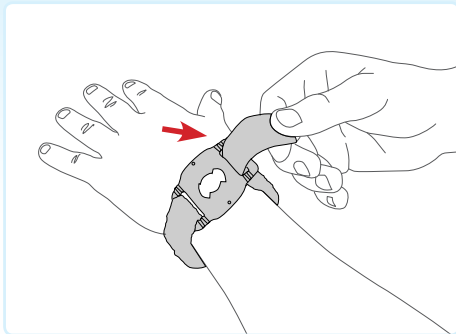


1. Getting Started

1. Choose the appropriate joint to position the 3DTutor™ on the subject.
2. Turn ON the switch on the side of the 3DTutor™.
3. Click on the MediTutor™ icon in order to enter the software.
4. Use the username **admin** and password **admin**.
5. Confirm that the 3DTutor™ is detected automatically by the software so the device display icon turns green.
6. Device Fitting:

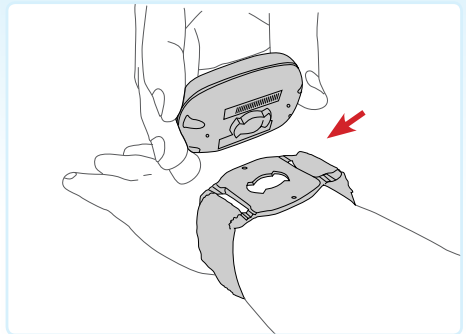
Step 1*

Wear strap holder around wrist



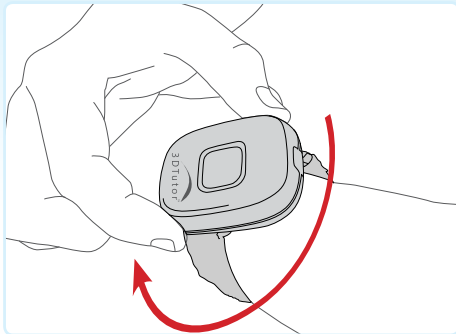
Step 2

Insert device to strap holder clip



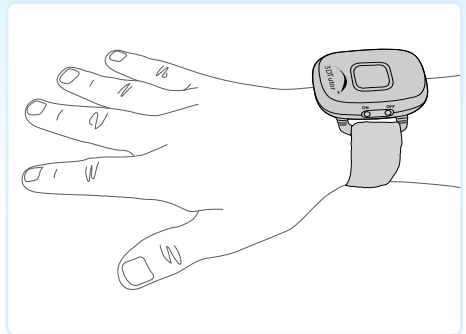
Step 3

To lock device in place twist 90°



Step 4

Confirm device logo distal facing



* Strap fitting positions for other joints appears in software.

7. The device is ready for evaluation/treatment use.
8. For detailed treatment instructions consult trained therapist or your vendor.

2. Warnings

1. The 3DTutor™ is not water resistant device.
2. The 3DTutor™ should be stored within the temperature range -30°C to +70°C.
3. It is advised to store the 3DTutor™ in its original packaging when not in use.
4. The device contains a compass that measures the earth's magnetic field. Do not use the device within direct proximity to metals e.g. Iron, that interfere with the measurement of the earth's magnetic field.
5. The device contains a charging battery (LiPo). Do not expose to fire, the battery should be charged by USB cable supplied.

3. Maintenance

1. Replace once a month straps in case of frequent usage of the device.
2. In case of battery replacement, plastic break, use instructions and items supplied by the manufacturer only.

4. Indications

The 3DTutor™ solution is intended for use during rehabilitation of the neck, trunk, shoulder, elbow, wrist, hip, knee, ankle following indications and in accordance with the Doctors instructions.

1. Damage to the CNS and or PNS caused by Stroke, Parkinson's disease, MS, head injuries, cerebral palsy, nerve injuries and neuromuscular disuse atrophy.
2. Orthopedic rehabilitation including fracture of the bones of the arm and shoulder, leg and hip.
3. Movement disorders characterized by impairment in accuracy and speed of motor movements.
4. Balance disturbances.

5. Contra-Indications

Do not use the 3DTutor™ without consulting a doctor in the following scenarios:

1. Open wounds in the treatment area.
2. General Systemic Infection e.g. MRSA.
3. Local skin infection at site where the 3DTutor™ is to be worn.
4. Inflammatory or Allergic reaction to the 3DTutor™ textile (very rare).
5. It is recommended to wash the body part and wipe down the straps with a sterile wipe before putting on the 3DTutor™.



6. Side Effects

Use of the 3DTutor™ system does not lead to any unwanted side effects. In the very unlikely event of skin irritations stop treatment and consult with your doctor.

7. Product Specification

7.1 Product Labels

- Product name: 3DTutor™
- Model: 3DT100

7.2 Dimensions

- Size (length/width/height): 54[mm] x 42[mm] x 16[mm]
- Weight: 30[gr]

7.3 Sensor

- Measurements: Pitch, Roll, Yaw [degrees]

7.4 Communication

- Communication: Wireless Bluetooth (class 1)
- Adapter: Bluetooth 2.0 USB dongle (class 1)

7.5 Power Supply

- Autonomy of battery: up to 6[hours]
- Recharge time: up to 75[min]
- Recharge method: Connecting the module to PC using supplied USB cable
- Firmware updates method: Connecting the module to PC using supplied USB cable
- Battery type: 3.7[V] 650[mAh] LiPo
- Voltage input: 5[V] DC
- Rated current input: 400[mA] at charging mode

7.6 Environmental conditions

- Usage temperature: +15°C to +30°C
- Storage temperature: -30°C to +70°C
- Relative humidity: 10% – 95%

- Atmospheric pressure: 500[hPa] – 1060[hPa]

7.7 Functionality

- Body attachment method: Velcro straps
- Size: All sizes
- Side: Left and Right

7.8 Features

- On/Off power switch button
- 3D body position preset button
- Bluetooth sleep mode
- 2 colors LED indicators;

Mode	Green LED	Orange LED
Link	On	Off
No Link	Blink 0.3Hz	Off
Sleep	Blink 1Hz	Off
FW Update	Blink 3Hz	Off
Charging	Off	On

7.9 Regulation

- The 3DTutor™ has been tested according to standard IEC 60601-1 (1988) Second Edition + Am.1 + Am.2 and IEC 60601-1-2 (2001)
- CE and FDA approved
- FCC

7.10 Manufacturer

- Company name: MediTouch Ltd.
- Address: 45 Hamelacha, Poleg industrial zone, Netanya, Israel.



7.11 Illustration

Side view



Rear view



Isometric view



8. Package

8.1 Content

- Aluminum case
- 3DTutor™
- MicroUSB 1.2m
- Bluetooth dongle
- 5 body attached straps
- 2 silica bags



8.2 Outside package

- L/W/H: 28[cm]x22[cm]x19[cm]
- Weight: 1[kg]



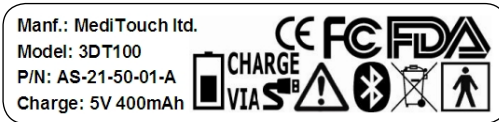
9. Labeling

9.1 On USB cable

- Device S/N

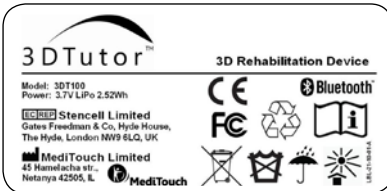


- Device P/N and regulation



9.2 On case

- Regulation label



9.3 On carton

- Device S/N



10. Warranty

1. The device is subject to 12 month warranty on: electronic components, manufacturing defects, any manufacturing and packaging damage.
2. The warranty does not extend to: Fabric, plastic, USB cable damage caused by miss or over use.

11. Contact Us

For Technical and clinical support call to your vendor or contact MediTouch office;



(972) 9 8637477



www.meditouch.co.il



(972) 9 8852935



info@meditouch.co.il



support.meditouch





MediTouch

Phone: (972) 9 8637477

Fax: (972) 9 8852935

Email: info@meditouch.co.il

Skype: [support.meditouch](https://www.skype.com/people/support.meditouch)

Web: www.meditouch.co.il