



# MediTouch

## MediTutor Rehabilitation Software

### Installation guide



MediTouch



# MediTouch

**MediTutor** Rehabilitation Software

**Installation guide**

**Standalone edition**

**Ver. 5.x**



# Table of Contents

---

<b>1.</b>	<b>Software License</b> .....	<b>4</b>
1.1	Online Activation .....	4
1.2	Manual Activation .....	4
<b>2.</b>	<b>Rights of Publication</b> .....	<b>5</b>
<b>3.</b>	<b>Uninstall</b> .....	<b>5</b>
<b>4.</b>	<b>Connect MediTutor Device</b> .....	<b>6</b>
4.1	HandTutor .....	6
4.2	ArmTutor .....	6
4.3	LegTutor .....	6
4.4	3DTutor .....	6
<b>5.</b>	<b>General</b> .....	<b>7</b>
5.1	Features .....	7
5.2	Users .....	7
5.3	Supporting hardware .....	7
5.4	Minimal computer requirements .....	7
<b>6.</b>	<b>Installation Stages</b> .....	<b>8</b>
<b>7.</b>	<b>Contact Us</b> .....	<b>10</b>

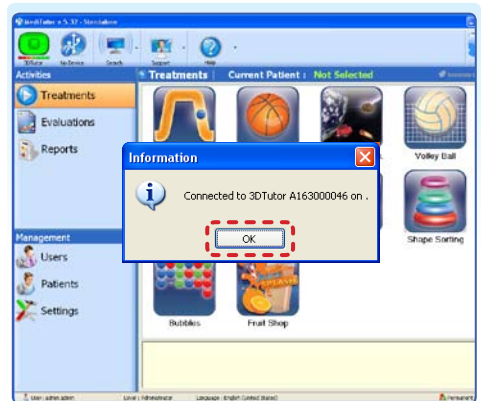
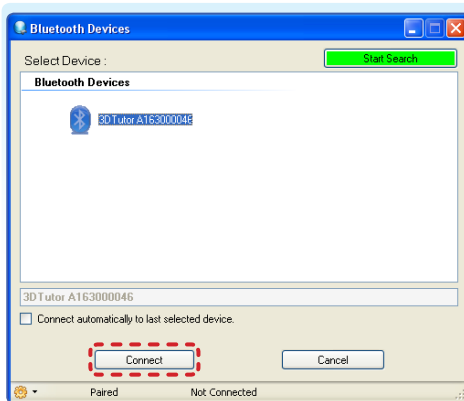




## 2. Rights of Publication

All rights are reserved. No part of this publication may be reproduced, stored in a retrieval system or transmitted in any form or by any means, mechanical, photocopying, recording or otherwise, without the prior written permission of MediTouch™ Ltd. MediTutor™ software and all MediTouch™ developed hardware products are registered trademarks of MediTouch™ Ltd. Microsoft and Windows are registered trademarks of Microsoft Corporation. TeamViewer is a registered trademark of Team Viewer.

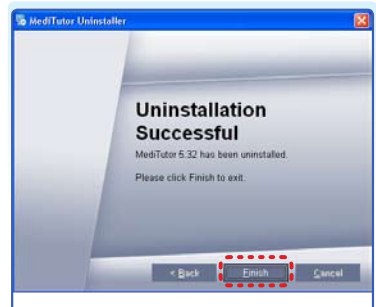
1. **3DTutor** will appear in **Device** table.
2. Choose it and press **Connect**.



## 3. Uninstall

To uninstall the software do the following:

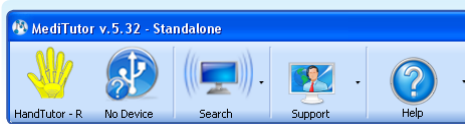
1. **Start** → **All Programs** → **MediTutor** → **Uninstall MediTutor**
2. Press **Next**
3. Press **Finish**



## 4. Connect MediTutor Device

### 4.1 HandTutor

1. **Connect** HandTutor into USB port and wait until Windows completes driver installation.
2. Yellow color **Hand** image will appear on top.
3. Stretch fingers and wrist in order to perform **calibration**, it will change from yellow to green.



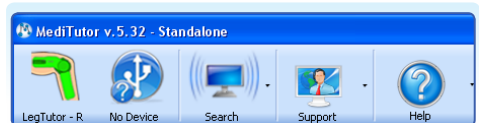
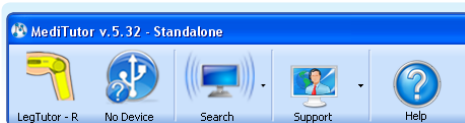
### 4.2 ArmTutor

1. Connect ArmTutor into USB port and wait until Windows completes driver installation.
2. Yellow color **Arm** image will appear on top.
3. Move the hinge in order to perform **calibration**, it will change from yellow to green.




### 4.3 LegTutor

1. Connect LegTutor into USB port and wait until Windows completes driver installation.
2. Yellow color **Leg** image will appear on top.
3. Move the hinge in order to perform **calibration**, it will change from yellow to green.



### 4.4 3DTutor

1. **Connect** Bluetooth dongle  into USB port or enable Bluetooth built-in (For laptops).
2. Verify installation completed successfully.

3. Turn on the switch on side of the 3DTutor
4. Press on **Search**.
5. Press on **Start Search**.
6. Wait until **installation completed successfully** (few minutes).



## 5. General

---

### 5.1 Features

- Compatible with Windows XP 32bit, Windows 7 32bit/64bit.
- User friendly graphical user interface.
- Can be used by in and out patients.
- Full treatment list.
- Full management and clinical patient record capabilities.
- Full evaluation management, data saving and reporting.

### 5.2 Users

Clients need treatments, evaluations, management users and patients.

### 5.3 Supporting hardware

- Five HandTutor™ gloves sizes with Left and Right sides.
- ArmTutor™ device with Left and Right sides.
- LegTutor™ device with Left and Right sides.
- 3DTutor™ device.

**Note:** Only 2 concurrent devices can be used!

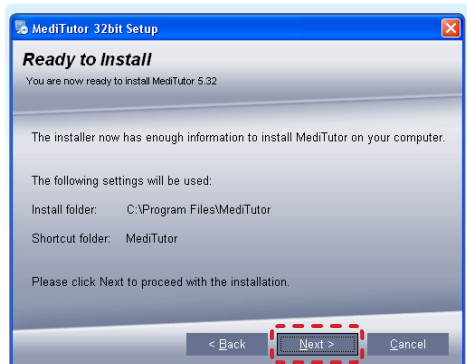
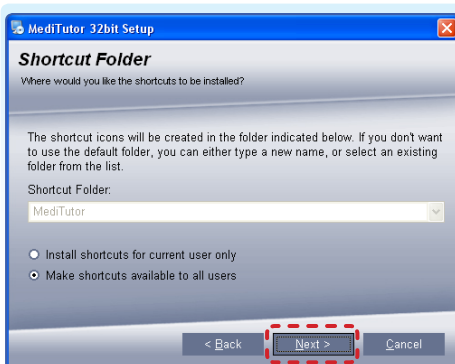
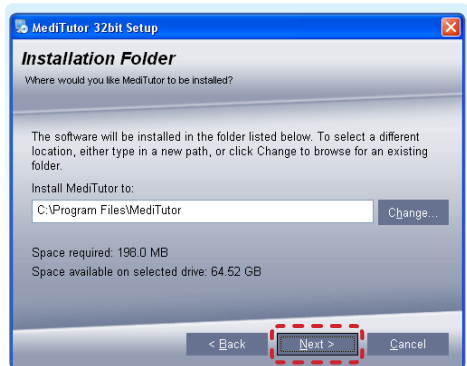
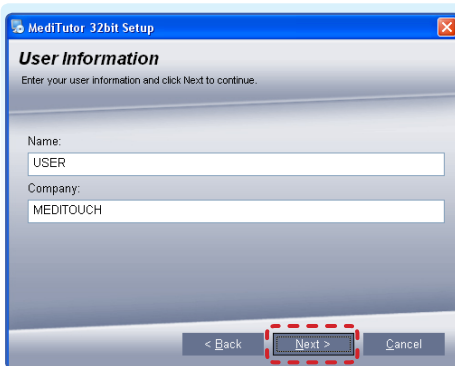
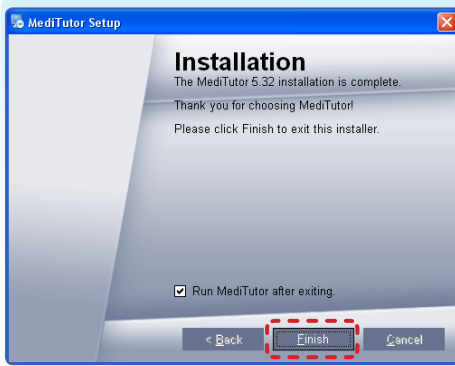
### 5.4 Minimal computer requirements

- OS: Windows XP-SP2, Windows 7 home basic
- CPU: Intel Pentium 4, AMD, 1.7 GHz or above
- Video card: Chipset Intel, OpenGL 2.1 support, minimum of 128Mb of RAM
- USB port: Two available USB channels
- Network card: If network services required
- Hard Drive space: 1GB
- On Windows 7 may be a need to update display card driver from the **Computer Management → Device Manager → Display adapters → Update driver...**



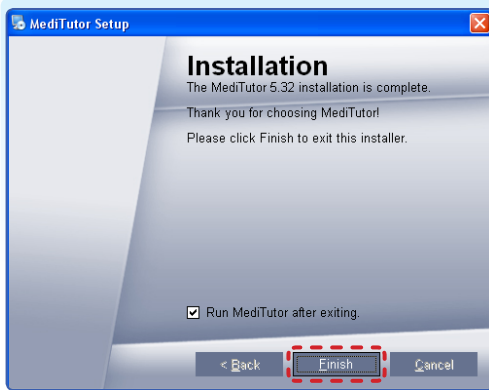
## 6. Installation Stages

1. Insert MediTutor Installation CD to your computer.
2. Wait few seconds until MediTutor setup loaded, and then follow the instructions:





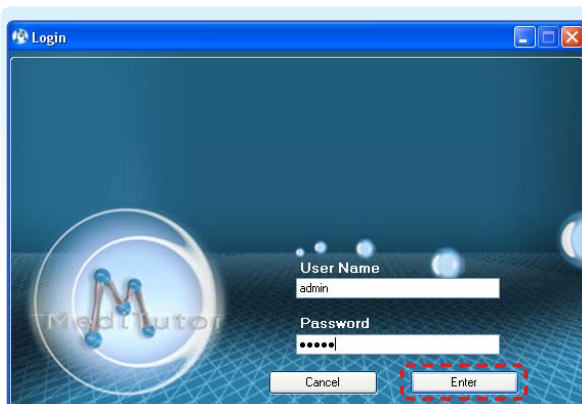
3. Wait few minutes until installation completed and press **Finish**.



4. For **21 evaluation days** press on **Activate** and then **Close** it.



5. Insert Username: **admin** Password: **admin** and press **Enter**.



## 7. Contact Us

---

For Technical and clinical support call to your vendor or contact MediTouch office;



(972) 9 8637477



[www.meditouch.co.il](http://www.meditouch.co.il)



(972) 9 8852935



[info@meditouch.co.il](mailto:info@meditouch.co.il)



[support.meditouch](https://support.meditouch)





## MediTouch

Phone: (972) 9 8637477

Fax: (972) 9 8852935

Email: [info@meditouch.co.il](mailto:info@meditouch.co.il)

Skype: [support.meditouch](https://www.skype.com/people/support.meditouch)

Web: [www.meditouch.co.il](http://www.meditouch.co.il)