

Why we need to perform firmware update?



Increase compatibility to new supporting operation systems.



Increase performances and additional features for product support.

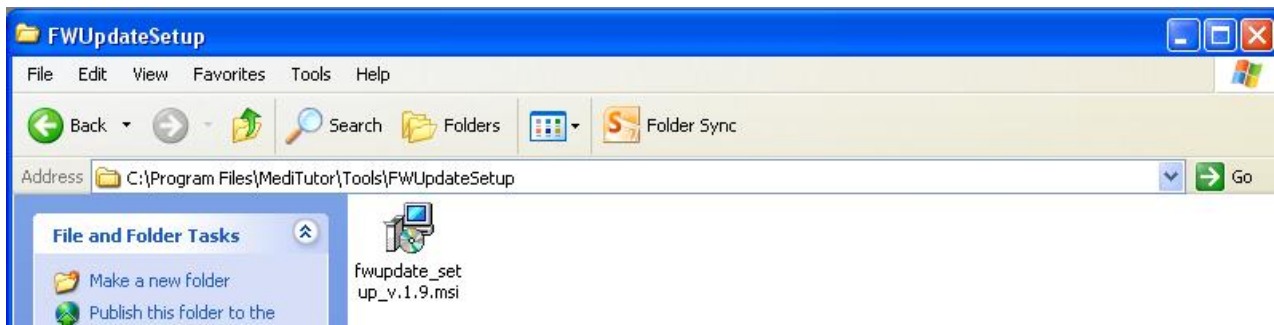


Compatible to MediTutor v.5

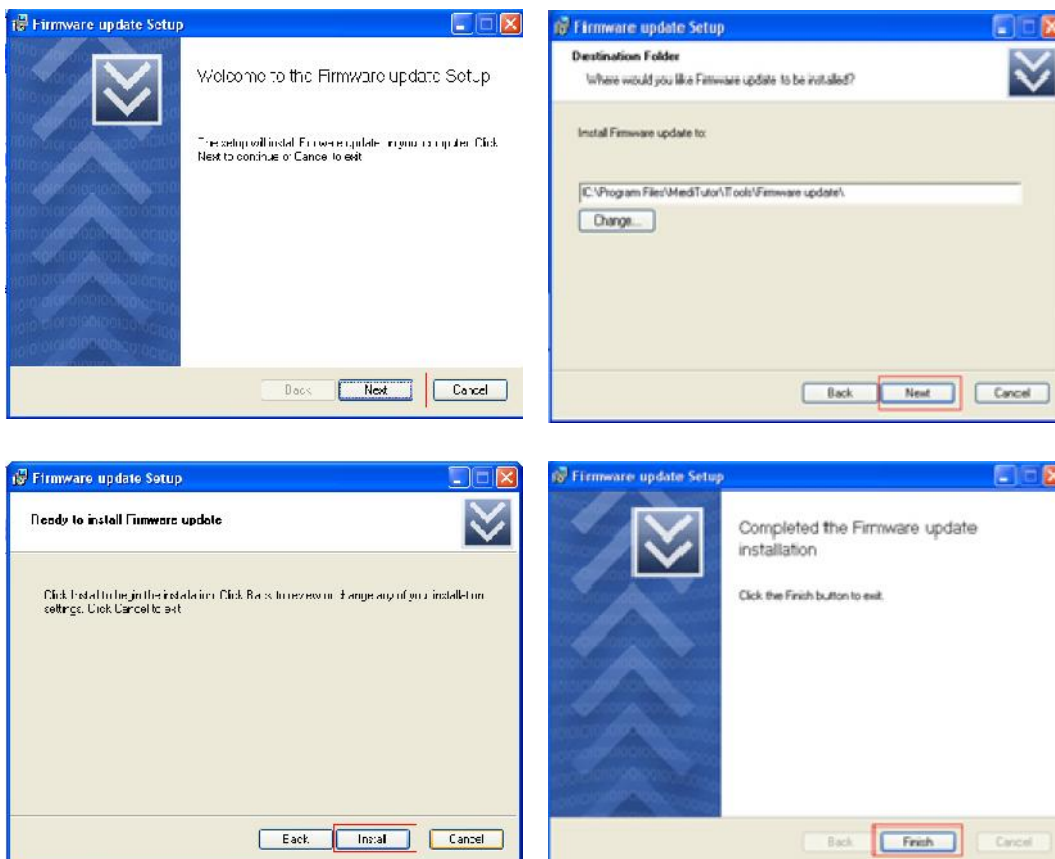
Software Installation

In order to support HandTutor device in MediTutor v.5 and above, you should install **Firmware update** on WinXP 32-bit or Win7 32-bit platform only.

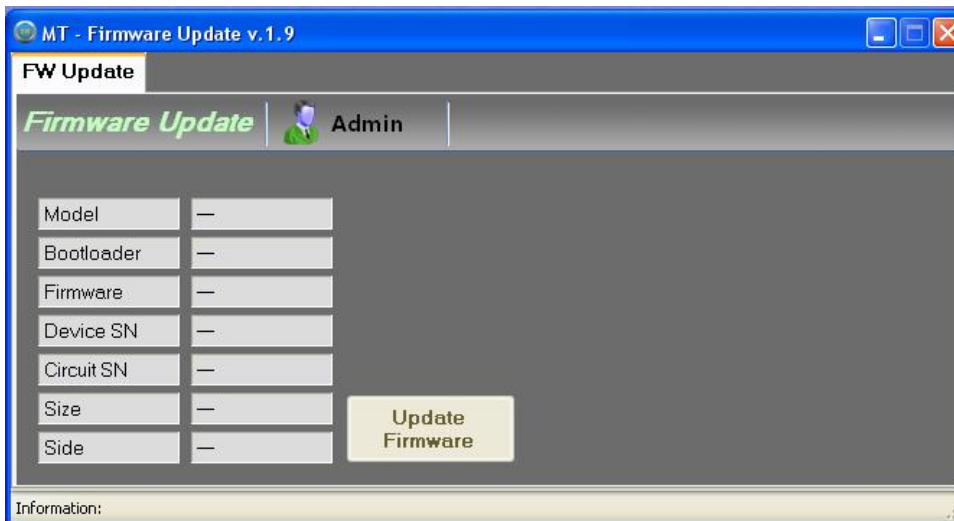
Install MediTutor v.5 and open C:\Program Files\MediTutor\Tools\FWUpdateSetup



Run **fwupdate_setup_v.1.9.msi** and follow instruction of software installation:

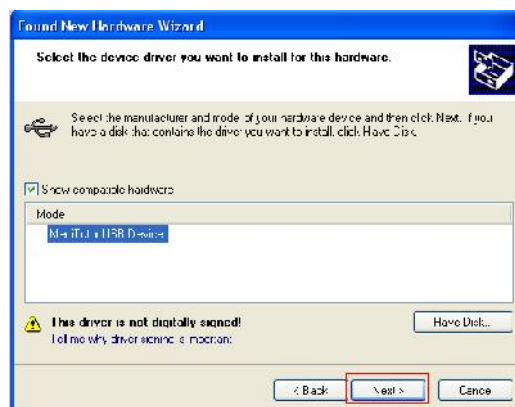
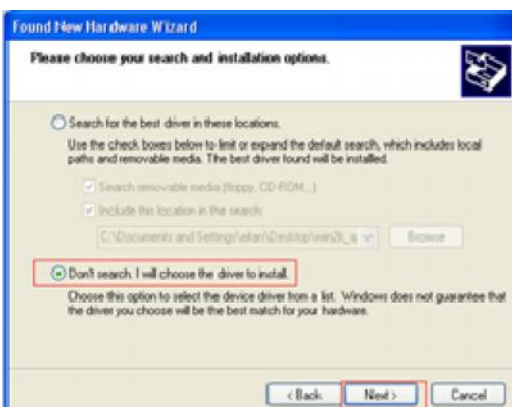
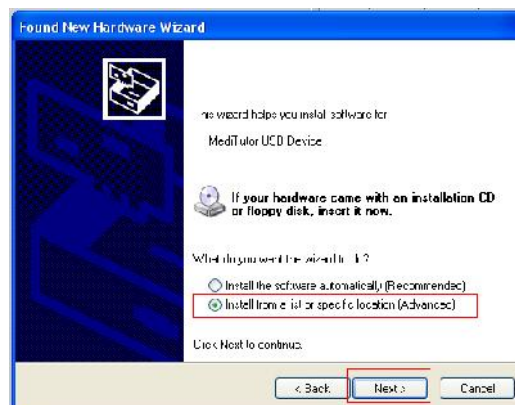


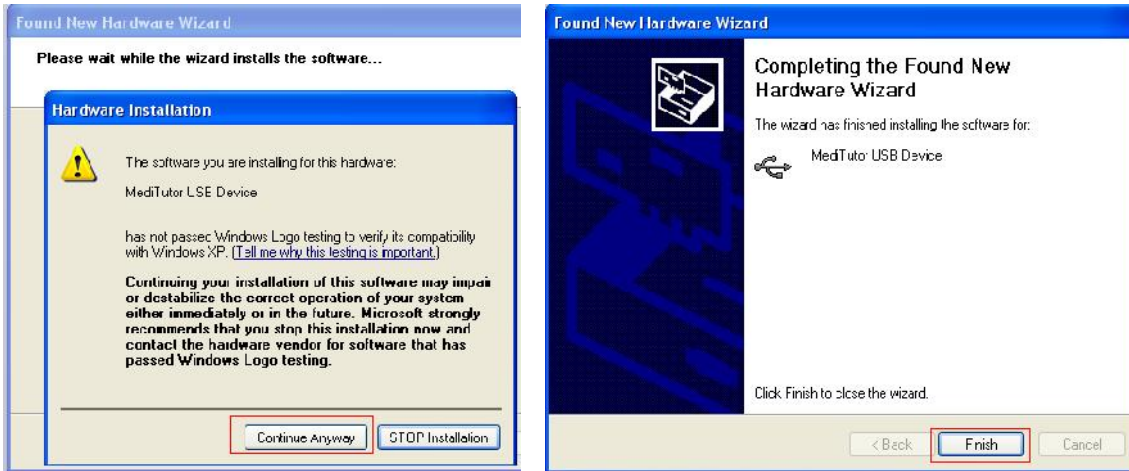
Open: **Start > All Programs > MediTutor > Tools > Firmware update**



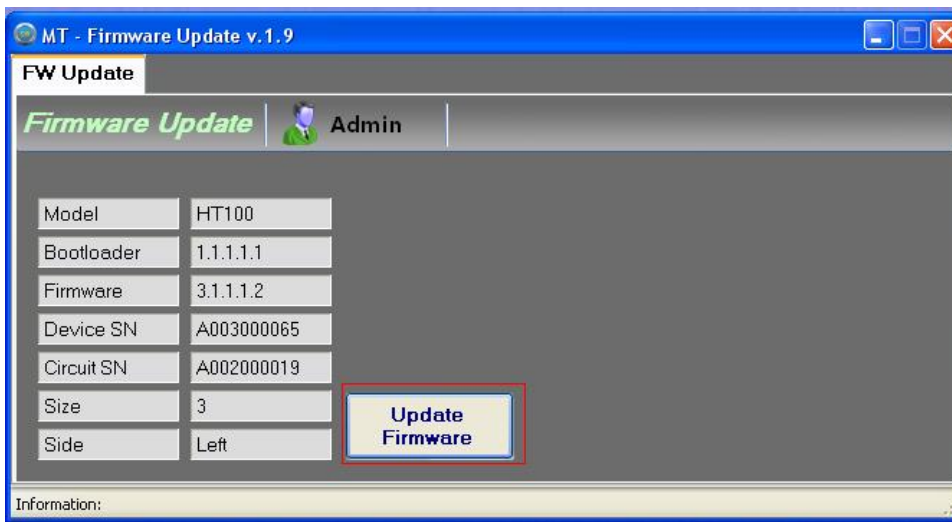
Connect the HT device into USB port.

If **Found New Hardware Wizard** will appear then follow next instructions:

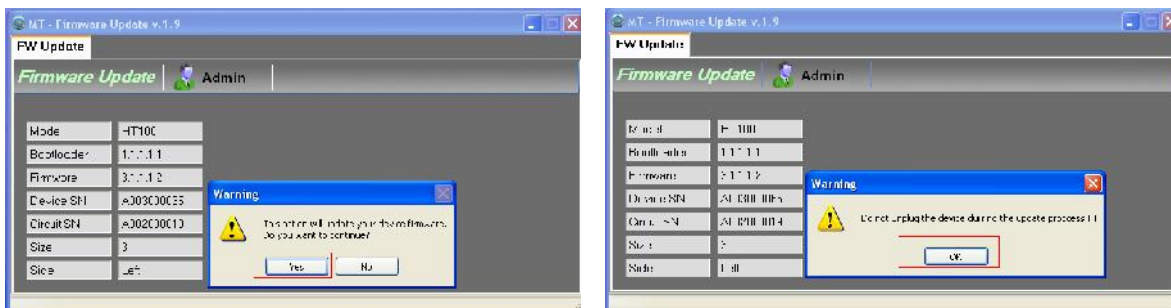


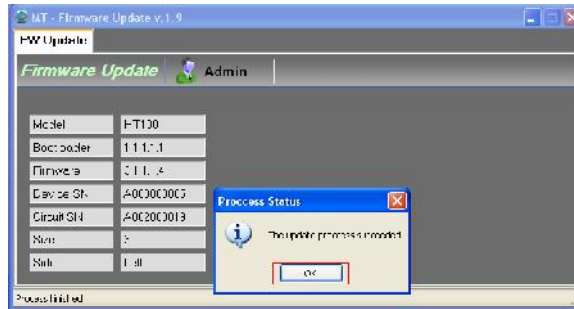
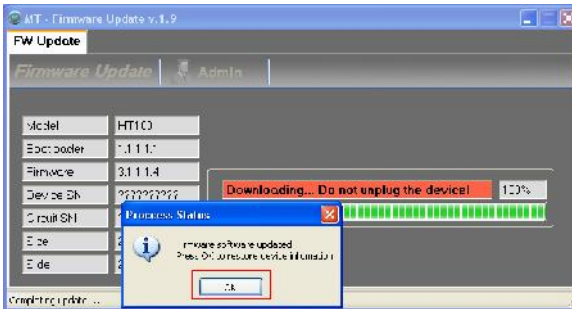


Verify all details appear and press **Update Firmware**



Follow software instructions:





Login to MediTutor and verify **HandTutor** icon appears:

