

# BalanceTutor™

## Product Crate

Dec 2015



*BalanceTutor a dynamic and static postural control trainer*

## 1 Crate Measures

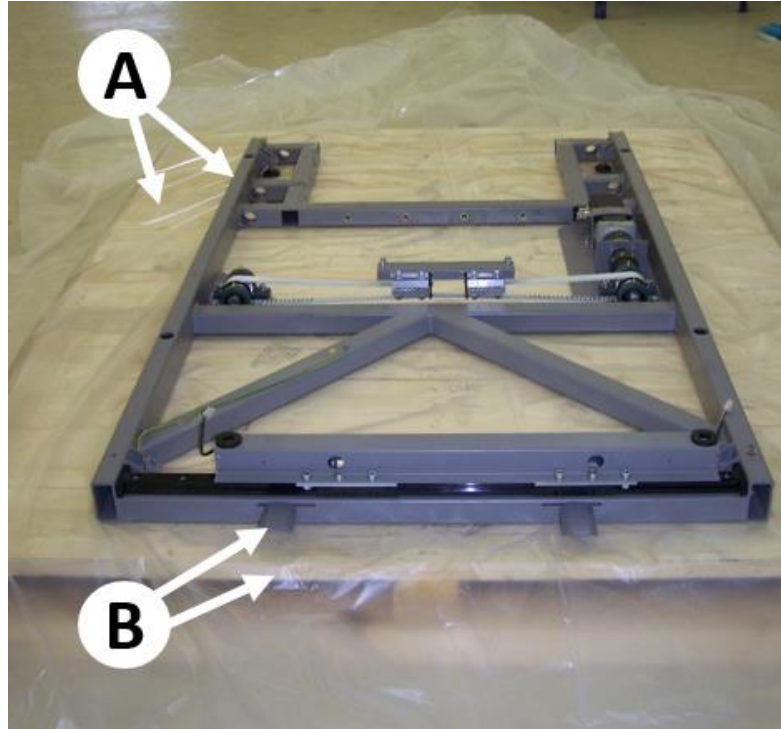
MEASURE	SIZE	UNIT
Outer dimentions	L240 x W180 x H150	cm
Inner dimentions	L230 x W170 x H135	cm
Gross weight (measured)	736 ±10	Kg
Net weight	500 ±10	Kg



## 2 Crate Assembly

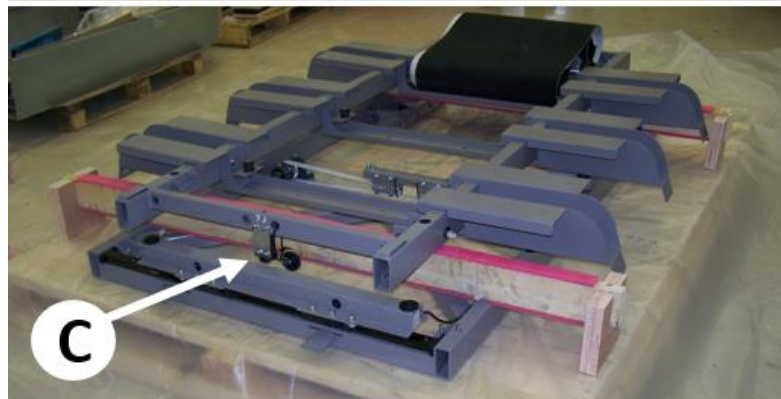
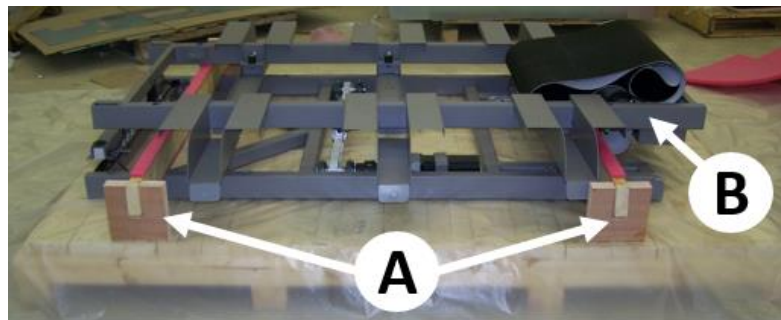
### 2.1 Base Frame setup

- A. Locate Frame Base on top of a PE bag.
- B. Locate the Frame Base 5cm from end of the two Limiters to the end of the crate base.



### 2.2 Frame Upper setup

- A. Place two wooden rods on the following position.
- B. Place the Frame Upper on top of the wooden rods.
- C. Fasten Limit Switch contactor to avoid accidental impact and break.





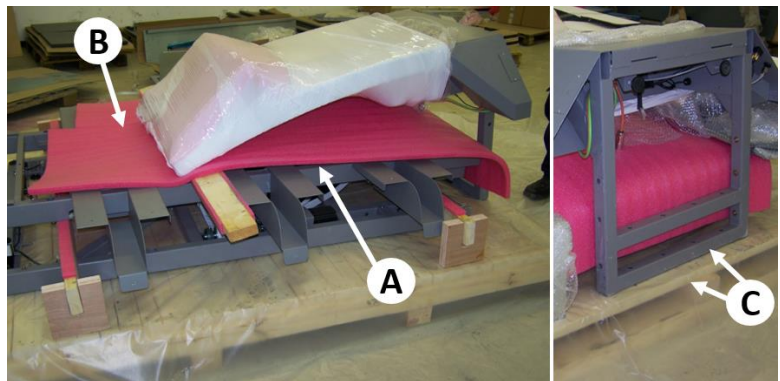
### 2.3 Bridge Base wrapping

- A. Use 1-2cm thickness PE Sponge on top of the touch screen to protect it.
- B. Use 1m bobbie nylon wide and 50cm wide PE Nylon to wrap the Bridge Base.



### 2.4 Bridge Base setup

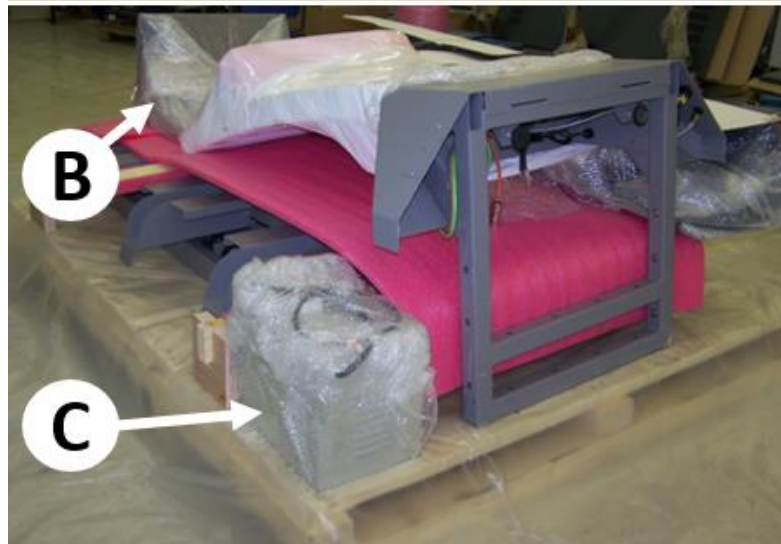
- A. Place Treadmill wood plate in its natural location inside the Frame Upper.
- B. Place 1-2cm thickness PE Sponge on top of the Frame Upper.
- C. Locate the Bridge Base 5cm from the edge of the crate base. Place 20cm side to the center to allow placing other items later.



## 2.5 Remain items setup

- A. Wrap all device External Covers in a Bobble PE.
- B. Wrap and place Electric Board Lower Cover in front of the touch screen.
- C. Wrap and place Isolation Transformer in this corner.

Wrap and locate all remained items inside available places in a secure way to avoid perturbations during transportation of the crate.



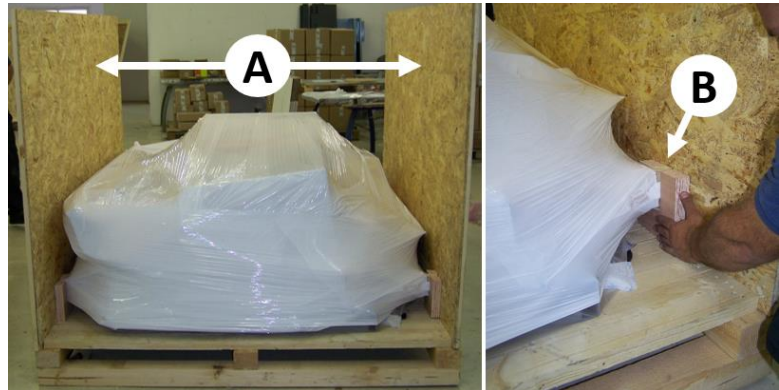
## 2.6 Wrapping

- A. Wrap all items using a 50cm PE nylon.



## 2.7 Side walls construction

- A. Assemble two side walls.
- B. Align and adjust 4 wooden supports together with the side walls and crate floor.



## 2.8 Side walls construction

- A. Build a supporting construction as follow to allow secure placement of the Bridge Upper.
- B. Locate Bridge Upper on top of the wooden supports as follow.





## 2.9 Finalizing assembly

A. Assemble two front walls then seal with the wooden top cover.

B. Stick the following if necessary:

- Shipping details
- Security code
- Crate warning labels
- Impact indicator
- Device S/N



### **3 Necessary Items for Packaging**

A. Bubble wrap 1m x 50m



B. Stretch film 50cm width

